

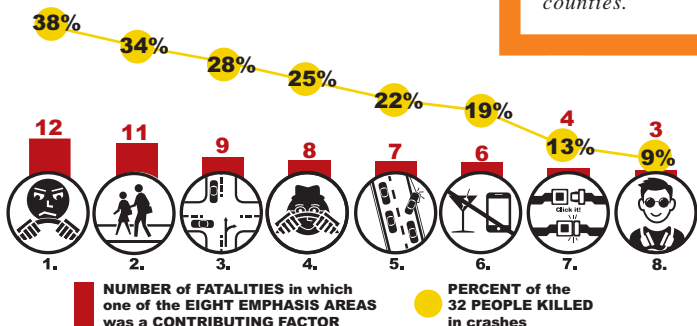


This bulletin provides an annual snapshot of road safety in CAMDEN COUNTY and its 37 municipalities. It highlights and compares trends at the state, county, and local levels.

What Contributed to Fatalities in 2013?

Similar to last year, aggressive driving remained the top contributing factor for over 38 percent of traffic fatalities in Camden County. The number of pedestrian fatalities in the region has increased over the last three years. In Camden County, over one third of the fatalities involved pedestrians. Improvements in the eight emphasis areas could significantly reduce crash fatalities, listed in descending order for Camden County.

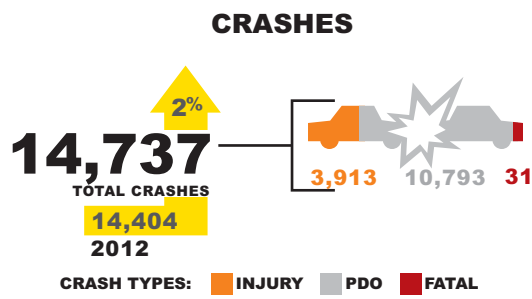
1. Curb Aggressive Driving
2. Ensure Pedestrian Safety
3. Improve the Design and Operation of Intersections
4. Sustain Safe Senior Mobility
5. Keep Vehicles on the Roadway and Minimize the Consequences of Leaving the Roadway
6. Reduce Impaired and Distracted Driving
7. Increase Seat Belt Usage
8. Ensure Young Driver Safety



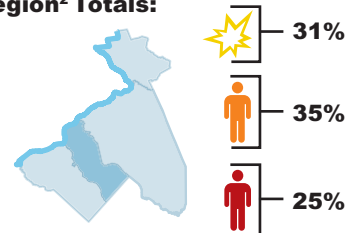
Crashes often have multiple contributing circumstances.

2013 Quick Crash Stats: Camden County

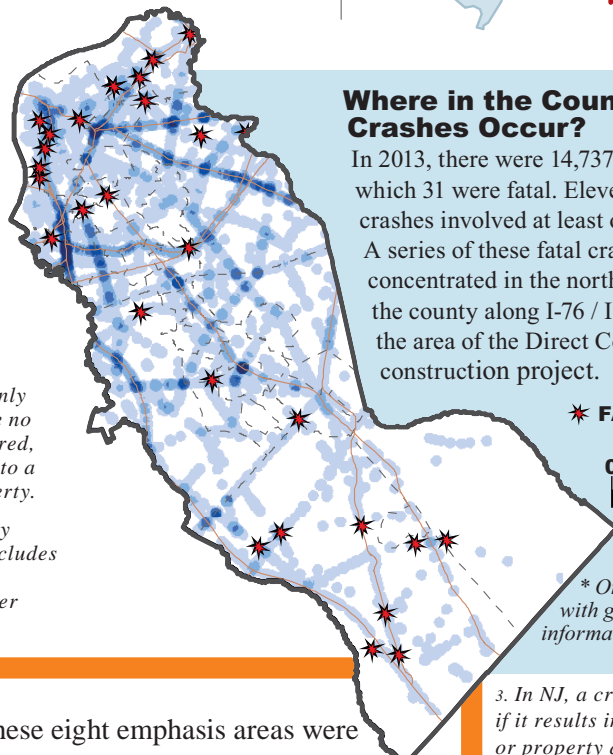
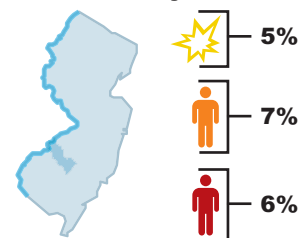
The following figures summarize total reportable³ crashes [🌟], number of people injured [👤] and killed [👤], and Property Damage Only (PDO)¹ crashes for Camden County in 2013. Compared to 2012, crashes and fatalities are up. Injuries are down.



Camden County, Compared to DVRPC's New Jersey Four-County Region² Totals:



Camden County, Compared to the Rest of New Jersey's Totals:



Where in the County Did Crashes Occur?

In 2013, there were 14,737 crashes, of which 31 were fatal. Eleven of these crashes involved at least one pedestrian. A series of these fatal crashes were concentrated in the northern section of the county along I-76 / I-295 / NJ 42, in the area of the Direct Connection construction project.

¹Property Damage Only (PDO): A crash where no one was killed or injured, but damage occurred to a vehicle or other property.

²DVRPC's New Jersey four-county region includes Burlington, Camden, Gloucester, and Mercer counties.

★ FATAL CRASH*

0 most crashes

* Only crash records with geographic information are shown.

These eight emphasis areas were identified in the 2015 Transportation Safety Action Plan: Improving Safety in the Delaware Valley, and were contributing factors in 97 percent of crash fatalities in the Delaware Valley, for the period 2010 through 2012.

³In NJ, a crash is reportable if it results in injury, fatality, or property damage of \$500 or more.

See the back for an inside look at crash trends for each municipality.

What Are the Crash Trends in My Municipality?



of CRASHES



of PEOPLE INJURED



of PEOPLE KILLED

MUNICIPALITY	2009			2010			2011			2012			2013			TOTALS: 2009-2013		
AUDUBON BORO.	176	56	1	177	49	0	73	21	0	31	11	0	5	4	0	462	141	1
AUDUBON PARK BORO.	15	6	0	5	1	0	11	4	0	11	3	0	4	0	0	46	14	0
BARRINGTON BORO.	258	63	0	307	97	0	241	81	0	157	46	0	84	24	0	1,047	311	0
BELLMAWR BORO.	953	268	0	910	274	2	877	261	1	905	222	0	775	187	1	4,420	1,212	4
BERLIN BORO.	110	72	0	103	83	3	133	103	2	117	109	1	191	98	1	654	465	7
BERLIN TWP.	87	60	0	80	54	2	83	55	0	94	79	1	89	53	0	433	301	3
BROOKLAWN BORO.	125	33	1	95	32	0	99	28	0	82	24	0	49	10	0	450	127	1
CAMDEN CITY	3,461	1,331	3	2,221	1,126	5	1,648	1,131	4	1,861	1,220	6	1,792	967	7	10,983	5,775	25
CHERRY HILL TWP.	2,578	1,095	4	2,817	1,041	4	2,851	1,060	10	2,870	1,028	6	3,016	1,126	2	14,132	5,350	26
CHESILHURST BORO.	41	8	2	24	5	0	47	5	0	17	1	0	40	14	0	169	33	2
CLEMENTON BORO.	268	131	0	256	117	0	246	145	3	229	116	1	285	140	0	1,284	649	4
COLLINGSWOOD BORO.	767	192	0	374	123	0	206	107	1	205	107	0	221	119	0	1,773	648	1
GIBBSBORO BORO.	101	23	1	132	33	0	112	32	0	113	32	0	93	28	0	551	148	1
GLOUCESTER CITY	338	109	0	309	107	2	544	177	0	544	162	1	518	151	0	2,253	706	3
GLOUCESTER TWP.	2,056	687	4	1,932	604	4	1,838	581	2	1,767	564	2	1,784	539	1	9,377	2,975	13
HADDON HEIGHTS BORO.	216	73	0	198	76	1	215	81	1	218	62	1	175	45	0	1,022	337	3
HADDON TWP.	320	114	0	357	114	1	332	108	1	297	109	0	318	90	2	1,624	535	4
HADDONFIELD BORO.	171	50	0	157	65	0	95	37	0	128	45	0	166	46	0	717	243	0
HI-NELLA BORO.	1	0	0	0	0	0	3	0	0	0	0	0	0	0	0	4	0	0
LAUREL SPRINGS BORO.	33	23	0	20	12	1	19	14	0	32	8	0	39	6	0	143	63	1
LAWNSIDE BORO.	121	37	0	127	46	0	97	30	3	79	25	0	74	14	0	498	152	3
LINDENWOLD BORO.	439	174	0	390	139	0	358	141	2	332	144	0	341	128	0	1,860	726	2
MAGNOLIA BORO.	243	83	0	220	84	0	215	89	0	232	75	1	242	75	0	1,152	406	1
MERCHANTVILLE BORO.	76	18	0	61	20	1	67	19	0	64	19	0	72	15	2	340	91	3
MOUNT EPHRIAM BORO.	214	92	0	185	56	0	224	69	0	216	66	0	181	47	0	1,020	330	0
OAKLYN BORO.	39	16	0	47	16	0	51	9	0	43	9	0	11	3	0	191	53	0
PENNSAUKEN TWP.	1,415	501	6	1,474	474	1	1,441	508	2	1,382	470	1	1,462	453	5	7,174	2,406	15
PINE HILL BORO.	202	71	1	215	63	1	196	99	0	194	89	0	212	87	1	1,019	409	3
PINE VALLEY BORO.	0	0	0	2	0	0	1	0	0	0	0	0	0	0	0	3	0	0
RUNNEMEDE BORO.	366	120	1	369	109	2	352	109	0	310	74	0	304	94	0	1,701	506	3
SOMERDALE BORO.	199	82	0	138	58	0	185	70	1	205	87	0	162	59	0	889	356	1
STRATFORD BORO.	105	67	1	111	87	0	14	6	0	41	25	0	130	73	0	401	258	1
TAVISTOCK BORO.	5	2	0	2	0	0	1	1	0	1	1	0	4	3	1	13	7	1
VOORHEES TWP.	738	278	2	722	304	0	653	281	0	669	261	0	781	277	0	3,563	1,401	2
WATERFORD TWP.	128	53	2	150	77	2	139	60	0	0	0	0	42	23	1	459	213	5
WINSLOW TWP.	809	377	10	1,069	477	11	928	420	11	910	399	5	1,032	427	8	4,748	2,100	45
WOODLYNNE BORO.	30	12	0	30	10	0	58	10	0	48	15	0	43	14	0	209	61	0
COUNTY-WIDE TOTALS	17,204	6,377	39	15,786	6,033	43	14,653	5,952	44	14,404	5,707	26	14,737	5,439	32	76,784	29,508	184

This bulletin provides an annual snapshot of road safety in Camden County and its 37 municipalities. It highlights and compares trends at the state, county, and local levels. This document complements the 2013 Annual Crash Data Bulletin for the Delaware Valley (DVRPC Publication #15023) and is a supplement to the 2015 Transportation Safety Action Plan: Improving Transportation Safety in the Delaware Valley (DVRPC Publication #15022). Analysis in this document was derived from the NJDOT crash database unless otherwise noted. For more information contact: Regina Moore at rmoore@dvrpc.org or 215.238.2862

